



# 汽车零部件行业物流最佳实践

沈皓

业务方案顾问

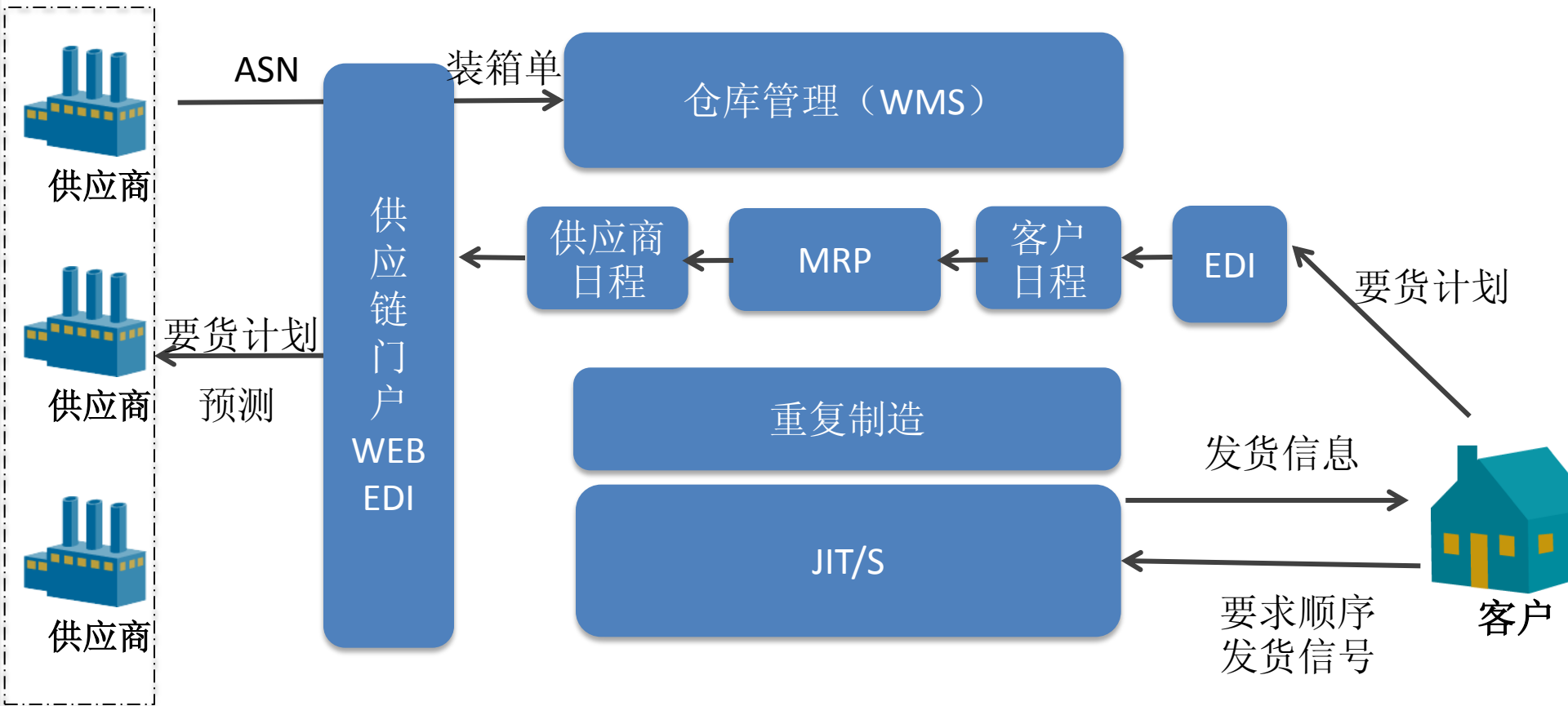
QAD中国



## 案例公司简介

- 汽车配件一级供应商
- 向**BMW**直接提货汽车内饰件
- 标准化、系统化的物流管理
  - EDI
  - MRP
  - 供应商门户(Supply Chain Portal, WEB EDI)
  - 仓库管理 (WMS)

## 方案概括

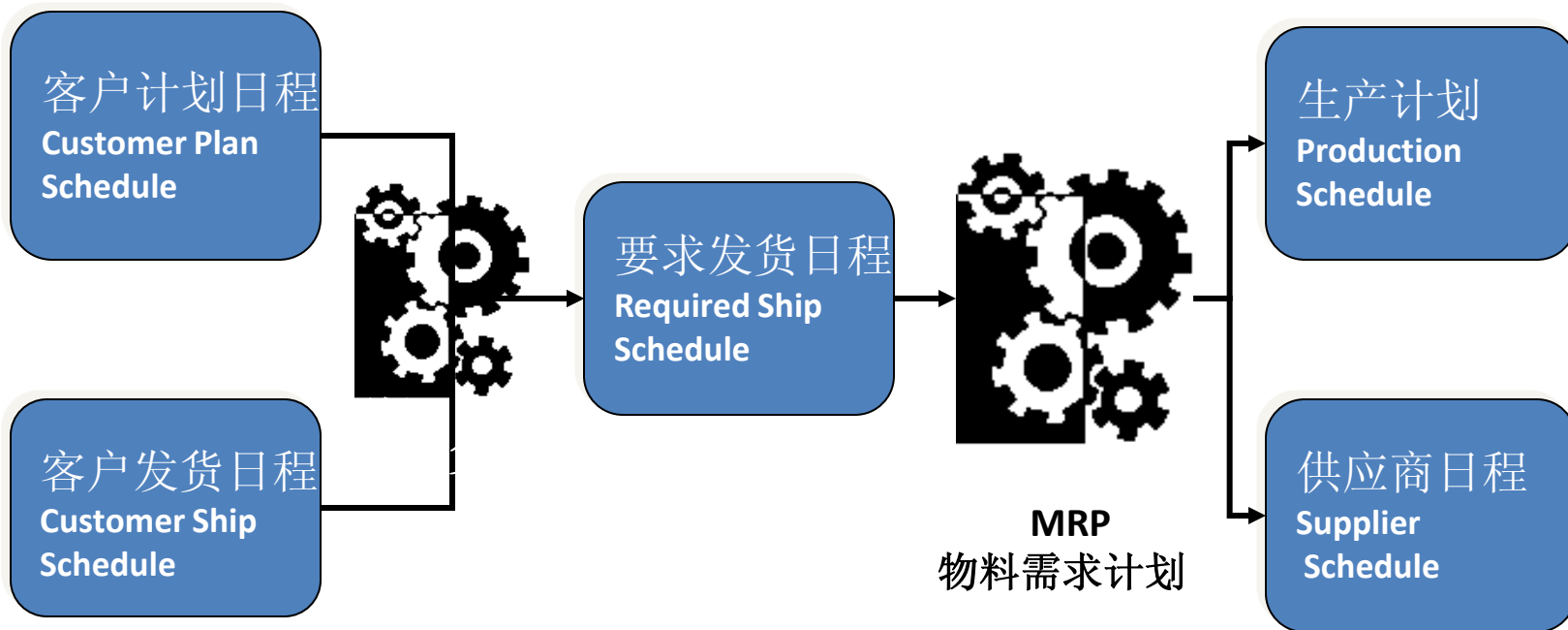




## 需求传递



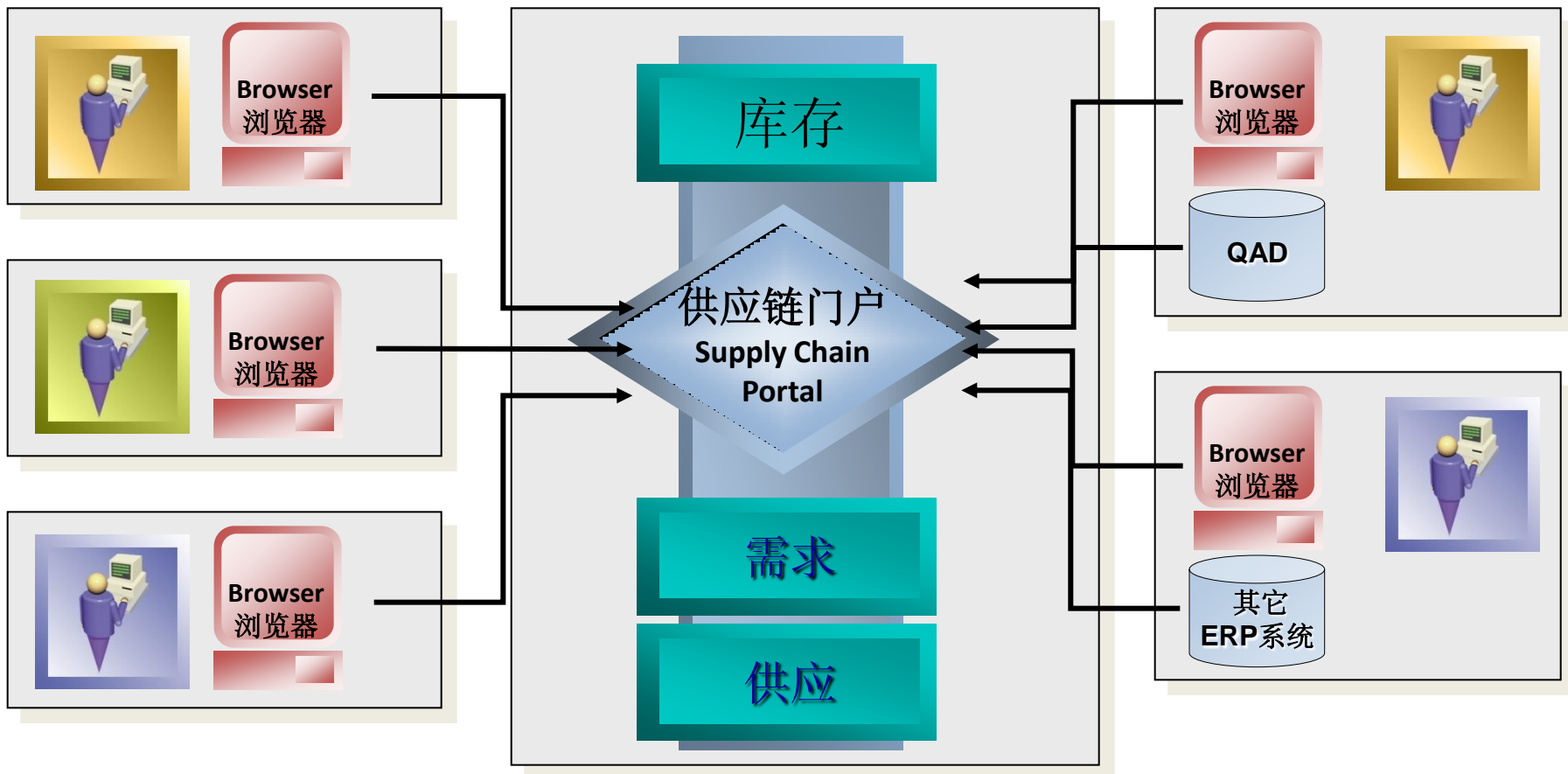
EDI



## 供应链门户

供应商

客户





登录: demo-301 @ FF [America/Los Angeles - PST] 域: QP  
自动刷新: 参考时间: 06:04:16 下午 刷新时间: 06:15:04 下午

消息 库存 订单 日程 送货通知 TMS 收货 发票 管理 提示

日程 供应商: (全部)

### 供应商送货排程信息

数据 过滤器 显示 打印 提醒

显示 50 行数 <<第一个 <以前 12 下次> 最后一个>> [1 - 50 的 63] 排序

订单	项	下达	交货日...	6+ 供应商	1+ 项	零件说明	必要数量	累计数量以前	3+ 累计数量	累计日期以
20010601	1	20080407-001	2008-04-07	<a href="#">Hydroxco Ga...</a>	<a href="#">22-110</a>	CORD,POWER,E...	100.0	1500.0	<a href="#">1600.0</a>	2008-04-06
20010601	1	20080407-001	2008-04-11	<a href="#">Hydroxco Ga...</a>	<a href="#">22-110</a>	CORD,POWER,E...	150.0	1500.0	<a href="#">1750.0</a>	2008-04-06
20010601	1	20080407-001	2008-04-18	<a href="#">Hydroxco Ga...</a>	<a href="#">22-110</a>	CORD,POWER,E...	125.0	1500.0	<a href="#">1875.0</a>	2008-04-06
CC000901	1	20080424-001	2008-04-04	<a href="#">Supplier1</a>	<a href="#">86625563</a>	FOURREAU	50.0	800.0	<a href="#">850.0</a>	2008-04-11
CC000901	1	20080424-001	2008-09-04	<a href="#">Supplier1</a>	<a href="#">86625563</a>	FOURREAU	50.0	800.0	<a href="#">900.0</a>	2008-04-11
CC000901	1	20080424-001	2008-09-11	<a href="#">Supplier1</a>	<a href="#">86625563</a>	FOURREAU	50.0	800.0	<a href="#">950.0</a>	2008-04-11
CC000901	1	20080424-001	2008-10-02	<a href="#">Supplier1</a>	<a href="#">86625563</a>	FOURREAU	50.0	800.0	<a href="#">1000.0</a>	2008-04-11
CC000901	1	20080424-001	2008-10-06	<a href="#">Supplier1</a>	<a href="#">86625563</a>	FOURREAU	100.0	800.0	<a href="#">1100.0</a>	2008-04-11
CC000901	1	20080424-001	2008-11-03	<a href="#">Supplier1</a>	<a href="#">86625563</a>	FOURREAU	100.0	800.0	<a href="#">1200.0</a>	2008-04-11
ss100000	2	20020110-001	2002-02-15	<a href="#">General Sup...</a>	<a href="#">88-4000</a>	PLASTIC PELLET...	20000.0	0.0	<a href="#">20000.0</a>	2002-01-09
ss100000	2	20020110-001	2002-02-22	<a href="#">General Sup...</a>	<a href="#">88-4000</a>	PLASTIC PELLET...	10000.0	0.0	<a href="#">30000.0</a>	2002-01-09
ss100000	2	20020110-001	2002-03-01	<a href="#">General Sup...</a>	<a href="#">88-4000</a>	PLASTIC PELLET...	20000.0	0.0	<a href="#">50000.0</a>	2002-01-09
ss100000	2	20020110-001	2002-03-08	<a href="#">General Sup...</a>	<a href="#">88-4000</a>	PLASTIC PELLET...	30000.0	0.0	<a href="#">80000.0</a>	2002-01-09
ss100000	2	20020110-001	2002-03-15	<a href="#">General Sup...</a>	<a href="#">88-4000</a>	PLASTIC PELLET...	40000.0	0.0	<a href="#">120000.0</a>	2002-01-09
ss100000	2	20020110-001	2002-03-22	<a href="#">General Sup...</a>	<a href="#">88-4000</a>	PLASTIC PELLET...	50000.0	0.0	<a href="#">170000.0</a>	2002-01-09

登录: rws-301 @ RWS Supplier [Singapore - SGT]

库存 订单 日程 发货通知 收货 Invoices 管理 提示

发货通知单维护

客户: QAD-301

### 供应商送货通知单明细信息维护

**发货通知**

发货通知单号码:  状态:    
验证允许的客户最大长度发货通知号.

货物发往: 10000 承运人:    
 12000 Skelly Ave   
 Tulsa, ok United States of America

发货日期:  邮件运输参考号:    
 目标交货日期:  运输方式:

参考链接:

[从离散订单中添加项](#)

[从预定订单中添加项](#)

项	零件标志	数量	单位	货运单标志	补充	地点	订单号	项下	交货日期	说明	参考链接
*	1 RWSC01	<input type="text" value="100.0"/>	<input type="text" value="EA"/>	<input type="text"/>		0.0 10000	PO200327	1 1	2007-04-30 00:00:00.0	Sample Item	<input type="button" value="查看/新建/编辑"/>

Supply Visualization (7.2.0) - 发货通知单维护 - Microsoft Internet Explorer

File Edit View Favorites Tools Help

Back Forward Stop Refresh Home Search Favorites

Address http://www.mfgx.net/sv/asns/edit.do?asnHeaderSysID=5053384&reset=true

Google 开始 书签 已拦截 30 个 翻译 发送至 设置 Enabled

登录: demo-301 @ QAD-301 [America/Los Angeles - PDT] 语言: QP

库存 订单 日程 发货通知 收货

发货通知 » 发货通知单维护 供应商: (全部)

**供应商送货通知单明细信息**

发货通知 http://www.mfgx.net - Supply Visualization (7.2.0) - Transport Labels - Microsoft Internet Explorer

Transport Labels 关闭 提示

Transport Labels 搜索

数据 显示 10 行数 << 第一个 < 以前 下次 > 最后一个 >> [0 - 0 的 0]

Label ID	Serial Indicator	Serial	Label
(没有数据)			

显示 10 行数 << 第一个 < 以前 下次 > 最后一个 >> [0 - 0 的 0]

项 Labels 1

保存(S)

New Transport Label

Transport Labels: AIAG Quick Receive 003

- AIAG Quick Receive 003
- AIAG Single Pack Carton 001
- AIAG Master Load Pallet 001
- AIAG Mixed Load Pallet 001
- AIAG Internal Container 001
- Odette OTL1-4 Master for Standard Pallets (S)
- Odette OTL1-4 Mixed Item Pack (G)
- Odette OTL1-4 Multiple Common Item Pack (M)
- Odette OTL1-4 Standard Label

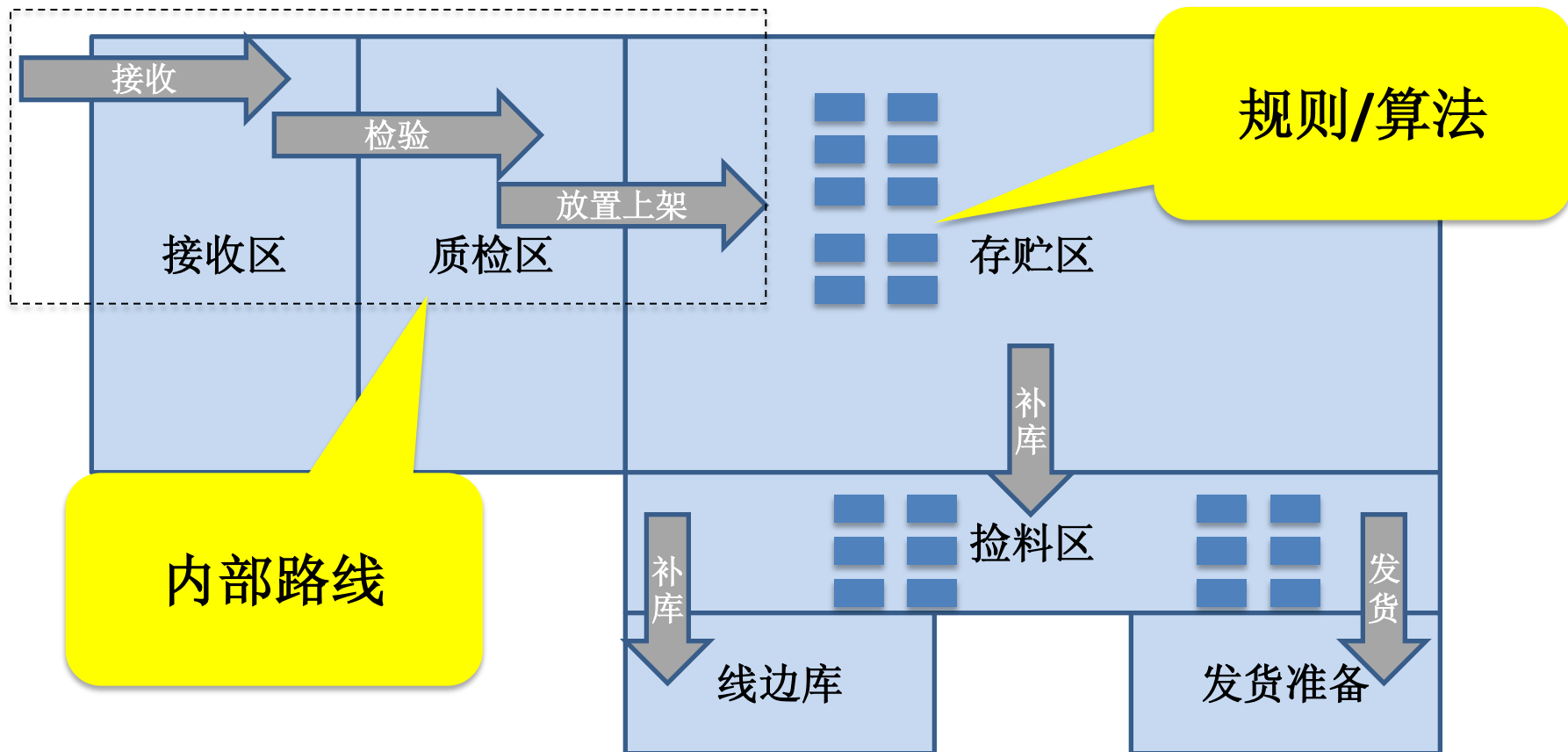
**选择运输标签标准**



## 供应链门户 - 运输标签样列

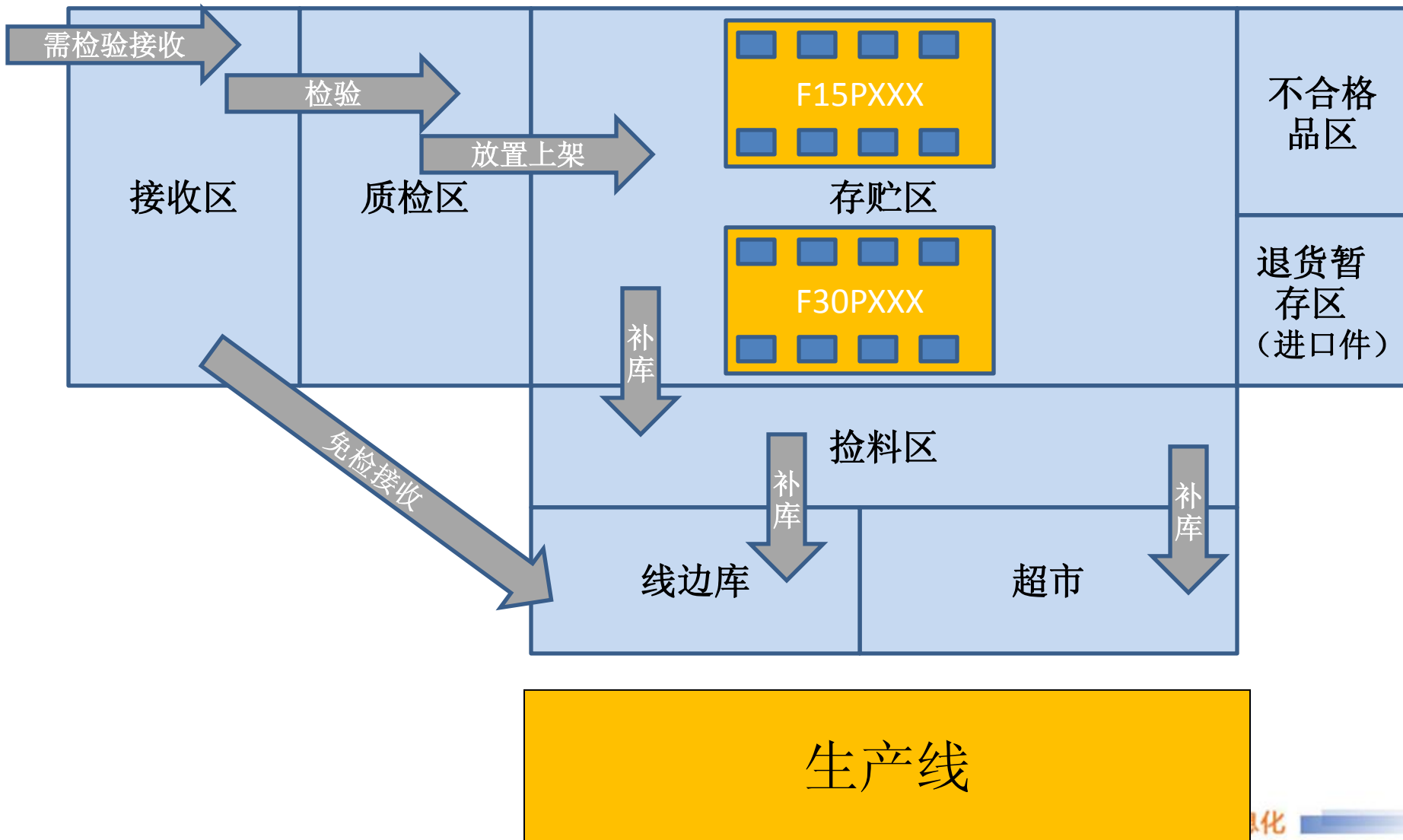
RECEIVER  CA UNITED STATES OF AMERIC		DOCK/GATE	
ADVICE NOTE NO (N) 2343243 		SUPPLIER ADDR BJK GENERAL STORE	
		NET WT (KG)	GROSS WT (KG)
			NO OF BOXES 1
PART NO (P) BK22-6 			
QUANTITY (Q) 10 		DESCRIPTION TIME TRANSPORTER	
SUPPLIER (V) 44088 		SUPPLIER PART NO (30S) BK22-6 	
		DATE D080329	ENG CHANGE
SERIAL (M) 56457657 		BATCH NO (H)	
Oolette Ver.1 Rev.4			

# 仓库管理 (WMS) 的基本逻辑





## 物流逻辑图





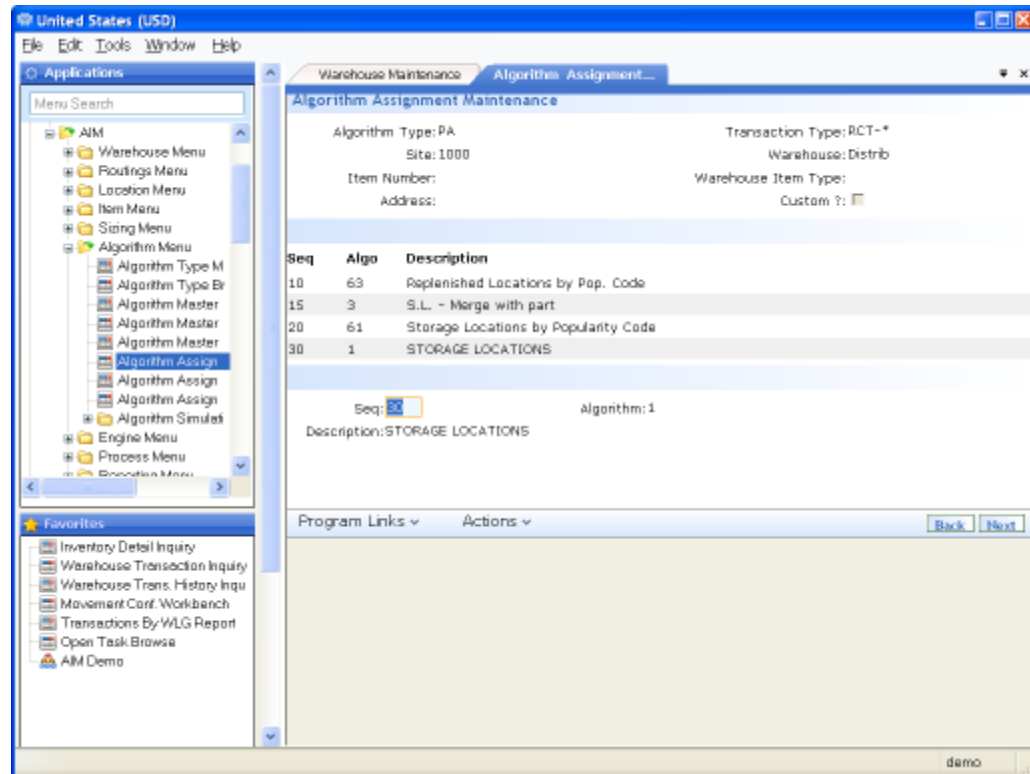
# 接收

- 自动产生托盘号
- 使用物流单位
- 接收后，触发上架流程



# 放置上架 (Put-Away) 规则

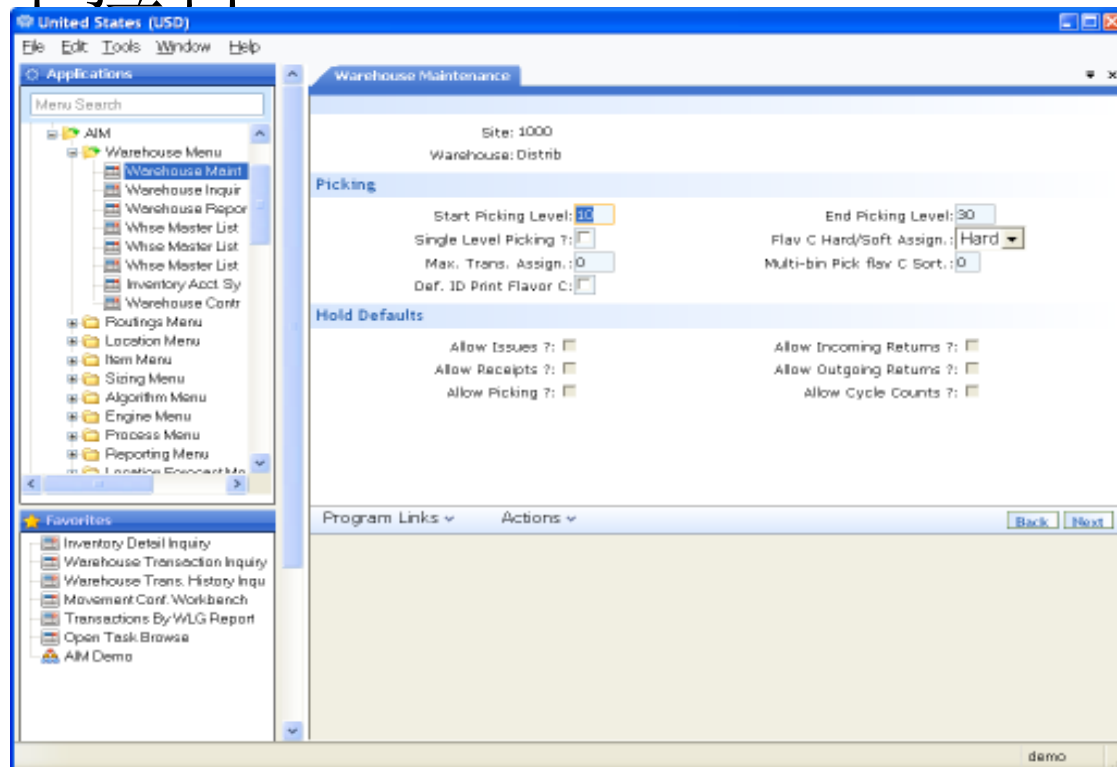
- 100多种放置上架算法
  - 尺寸
  - 重量
  - 合并
  - 批量





# 高级捡料逻辑

- 单个订单领料或按批量/波浪(Wave pick)
- 一次为多个订单捡料
- 支持
  - LIFO
  - FIFO
  - FEFO
  - ...





## 举例-接收与上架

Transaction Type: RCT-\*

Site: US-D3

Warehouse: US-D-3

Item Number: \_\_\_\_\_

Warehouse Item Type: \_\_\_\_\_

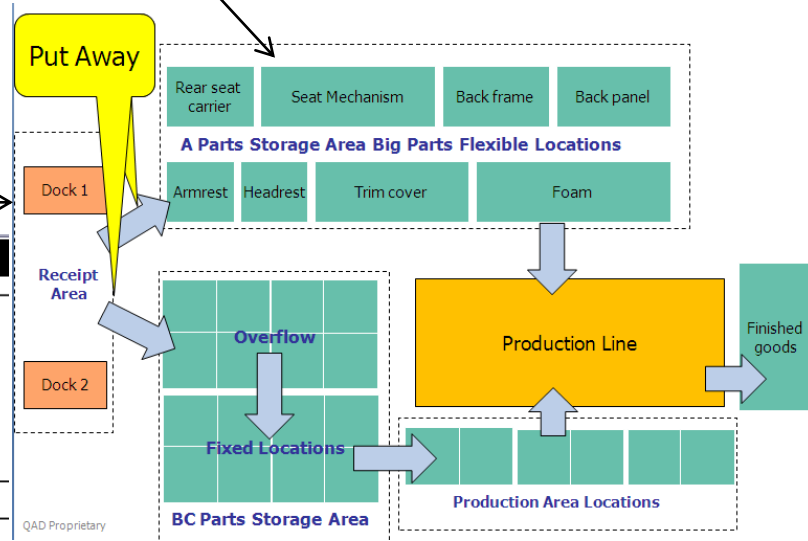
Address: \_\_\_\_\_

Custom: No

Internal Routing: **Receipt**

Custom Program: \_\_\_\_\_

Internal Routing Receipt			
Sequence	Internal Routing Group	System Code	Task
10	Receive	RF	TRANSFER
20	Storage	RF	TRANSFER



whalasmt.p 3+ 4.6.9 Algorithm Assignment Maintenance

Algorithm Type: PA	Transaction Type: RCT-*
Site: US-D3	Warehouse: US-D-3
Item Number: _____	Warehouse Item Type: _____
Address: _____	Custom: No

Assigned Algorithms

Seq	Algo	Description
10	3	S.L. - Merge with item
20	2	Empty Storage Locations
30	1	Storage Locations

## 举例- 边线库补货 (看板扫描)

vhppmt.p 1+

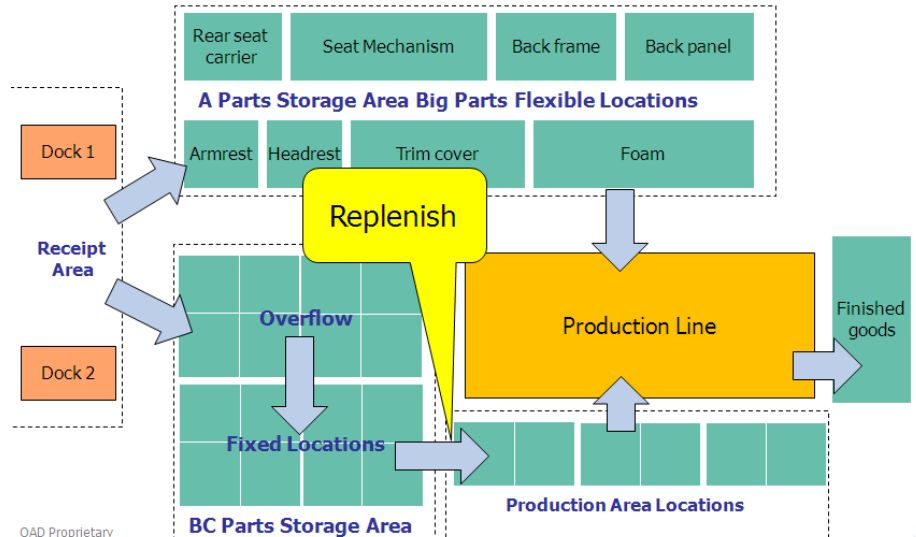
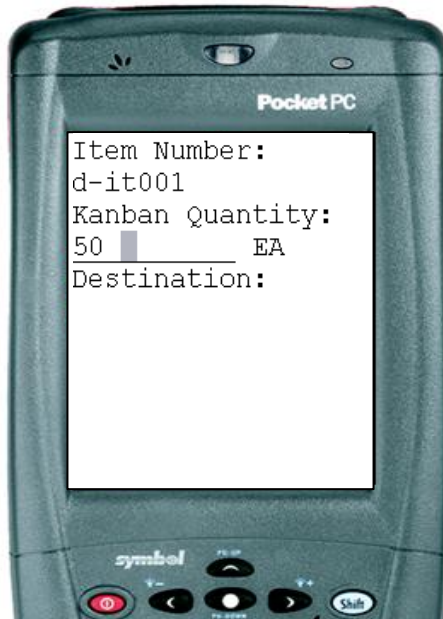
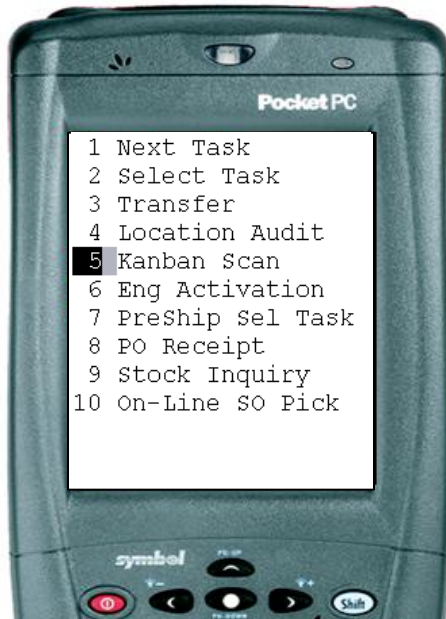
4.4.5 Multi-Level Item Maintenance

08/10/10

Item Number: D-IT001	Item 001
UM: EA	
Site: US-D3	Warehousing Site

### Site Data and Default Warehouse Data

Location: <u>MRList</u>	Single PA Trans: <u>No</u>
Warehouse Item Type: _____	Issue Method: _____
Replenishment Type: _____	Print ID: <u>No</u> ID Qty: <u>0</u>
Popularity: _____	OPC Threshold: <u>0.0</u>
<b>Default Kanban Quantity: <u>50.0</u></b>	Kanban Replen List: <u>WAVERP</u>



QAD Proprietary



# 谢 谢